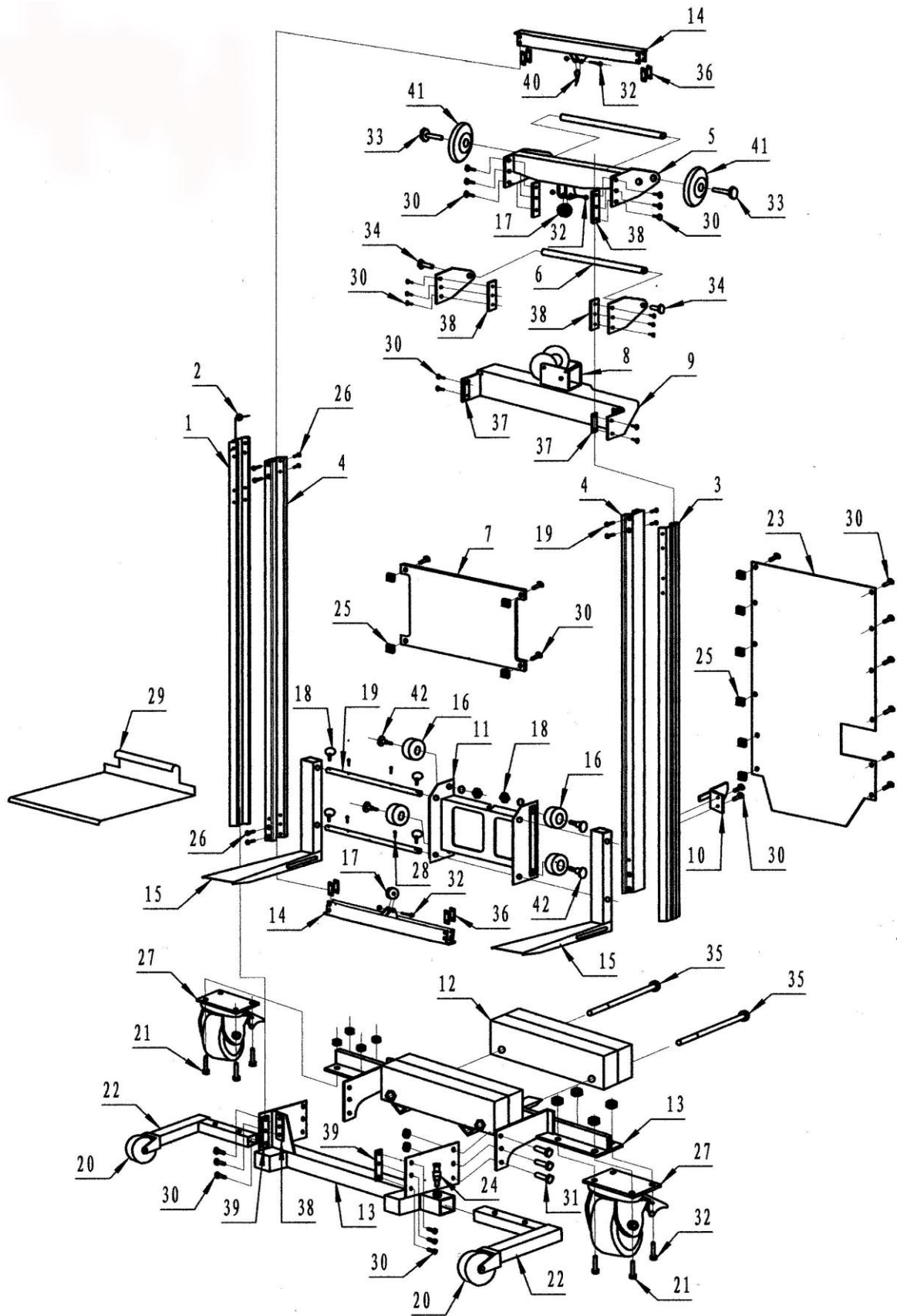


#273517 HWLCB-5



| WESCO # | Ref. No. | Description | Qty. |
|---------|----------|--------------------------------|------|
| | 1 | Left Mast Frame | 1 |
| | 2 | Gasket | 30 |
| | 3 | Right Mast Frame | 1 |
| | 4 | Inner Frame | 2 |
| | 5 | Up Support Frame Assembly | 1 |
| | 6 | Operator Handle | 1 |
| | 7 | Decal Plate | 1 |
| 273547 | 8 | Manual Winch | 1 |
| | 9 | Winch Mounting Support Bracket | 1 |
| | 10 | Limit Position Assembly | 1 |
| 273536 | 11 | Carriage | 1 |
| | 12 | Counterweight Base | 2 |
| | 13 | Counterweight Support Weldment | 1 |
| | 14 | Beam | 2 |
| 273538 | 15 | Fork | 2 |
| | 16 | Roller Wheel | 4 |
| 273531 | 17 | Upper and Lower Pulley | 3 |
| 273546 | 18 | Fork Lock Pin | 4 |
| 273537 | 19 | Carriage Crossbars | 2 |
| 273542 | 20 | Fixed Wheel 4" | 1 |
| | 21 | Hexagon Headed Bolt M10x25 | 1 |
| | 22 | Adjustable leg | 2 |
| | 23 | Baffle Plate | 1 |
| 273540 | 24 | Leg Lock Pin | 2 |
| | 25 | Square Nut M6 | 2 |
| | 26 | Flat Head Screw M6x20 | 2 |
| 273543 | 27 | Swivel Castor 5" | 1 |
| | 28 | Spring pin | 1 |
| 273518 | 29 | Deck Platform(option) | 1 |
| | 30 | Hexagon Headed Bolt M6x12 | 38 |
| | 31 | Hexagon Headed Bolt M8x25 | 8 |
| 273532 | 32 | Hexagon Headed Bolt M10x60 | 3 |
| | 33 | Hexagon Headed Bolt M12x70 | 2 |
| | 34 | Hexagon Headed Bolt M12x25 | 2 |
| | 35 | Hexagon Headed Bolt M12x280 | 2 |
| | 36 | Fastness Plate(short) | 8 |
| | 37 | Fastness Plate | 2 |

| | | | |
|--------|----|----------------------------|---|
| | 38 | Fastness Plate(long) | 6 |
| | 39 | Elongated Fastness Plate | 2 |
| | 40 | Cable Ring | 1 |
| 273530 | 41 | Loading Wheels 4" | 2 |
| | 42 | Roll Wheel Central Spindle | 4 |

273552 NOT SHOWN CABLE: 500 LBS

HWLSD-5 (273517)
RAISED HEIGHT
FORKS DOWN: 47
FORKS UP: 70

LOWERED HEIGHT
FORKS DOWN: 2
FORKS UP: 25
500 LBS CAPACITY

